

Datalogic S.r.l.

Via San Vitalino 13
40012 Calderara di Reno (BO)
Italy
Tel. +39 051 3147011
Fax +39 051 3147205

©2024 Datalogic S.p.A. and/or its affiliates

All rights reserved. Without limiting the rights under copyright, no part of this documentation may be reproduced, stored in or introduced into a retrieval system, or transmitted in any form or by any means, or for any purpose, without the express written permission of Datalogic S.p.A. and/or its affiliates.

Owners of Datalogic products are hereby granted a non-exclusive, revocable license to reproduce and transmit this documentation for the purchaser's own internal business purposes. Purchaser shall not remove or alter any proprietary notices, including copyright notices, contained in this documentation and shall ensure that all notices appear on any reproductions of the documentation.

Electronic versions of this document may be downloaded from the Datalogic website (www.datalogic.com). If you visit our website and would like to make comments or suggestions about this or other Datalogic publications, please let us know via the "Contact" page.

Disclaimer

Datalogic has taken reasonable measures to provide information in this manual that is complete and accurate, however, Datalogic shall not be liable for technical or editorial errors or omissions contained herein, nor for incidental or consequential damages resulting from the use of this material. Datalogic reserves the right to change any specification at any time without prior notice.

Trademarks


Datalogic and the Datalogic logo are registered trademarks of Datalogic S.p.A. in many countries, including the U.S.A. and the E.U.

Memor is a trademark of Datalogic S.p.A. and/or its affiliates. All other brand and product names may be trademarks of their respective owners.

Support Through the Website

Datalogic provides several services as well as technical support through its website.

Log on to www.datalogic.com.

For quick access, from the home page click on the search icon , and type in the name of the product you're looking for. This allows you access to download Data Sheets, Manuals, Software & Utilities, and Drawings.

Hover over the Support & Service menu for access to Services and Technical Support.

MEMOR™ 30/35 FAMILY

QUICK START GUIDE



Memor 30/35 4 SLOT DOCK

MODEL: SGV4SDWRD

Warranty Terms and Conditions

Refer to the **Memor 30/35 User's Manual**, downloadable from our website.

Read the following QR code for quick access to the product page. This allows you access to download Data Sheets, Manuals, Software & Utilities, and Drawings.



www.datalogic.com



822004652 (Rev. C) Sept. 2024

OUT OF THE BOX

The Memor 30/35 4 Slot Dock package contains:

- 4 Slot Dock
- Dual Lock Feet (x4)
- Dual Lock Adhesive Pads (x4)
- Quick Start Guide

Remove all the components from their packaging; check their integrity and compare them with all the packing documents.

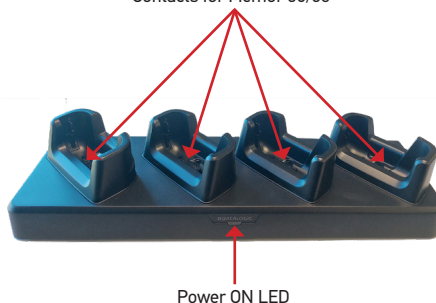


CAUTION: Keep the original packaging for use when sending products to the technical assistance center. Damage caused by improper packaging is not covered under the warranty.

GENERAL VIEW

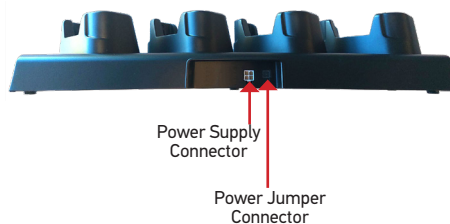
Front View

Contacts for Memor 30/35



Power ON LED

Back View



Power Supply Connector

Power Jumper Connector

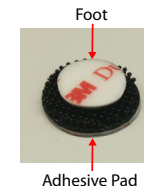
FAST THE DOCK TO A SURFACE

To securely fasten the 4 Slot Dock to tables, desks and other surfaces, and to prevent the dock from moving when you remove the device, you have two options:

1. use the four velcro dual lock feet provided with the matching dual-lock adhesive pads
2. use two M5 screws and the two screw holes on the bottom of the dock.

Install the Dual lock Feet

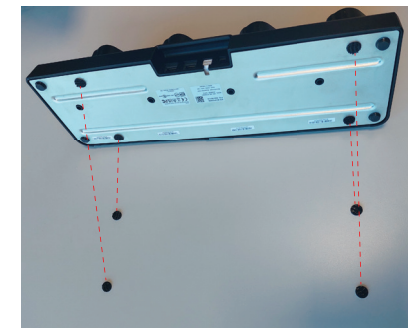
1. Stick each dual lock foot together with its dual lock adhesive pad.



2. Peel off the protective liner from the back of the adhesive pads and place them on the bottom of the dock.

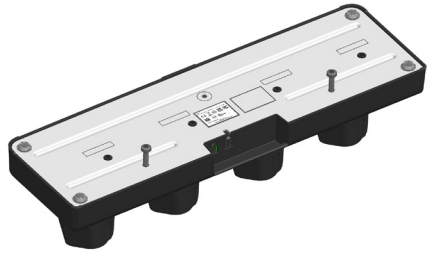


3. Peel off the protective liner from the back of the feet, place the dock on a pre-cleaned surface and press firmly into place.

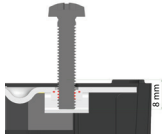


Screw the Dock to a Surface

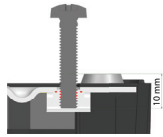
Use two M5 screws to secure the dock to a surface.



CAUTION: The maximum length of the screw must equal the surface thickness plus 8 millimetres if rubber feet are not installed, 10 millimetres if rubber feet are installed.



Without Rubber Feet



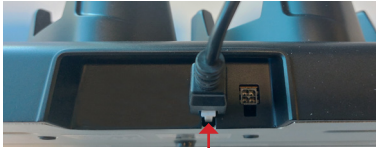
With Rubber Feet

POWER THE DOCK



CAUTION: Use only the Datalogic power supply 94ACC0380 to power the 4 Slot Dock.

Press the locking clip and pull the plug to remove the power supply cable:

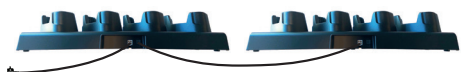


DAISY CHAIN CONNECTION

The daisy chain connection allows to power two docks with one power supply.

To connect a second cradle use the Power Jumper (available as optional accessory, p/n 91ACC0049).

1. Connect the first dock to the second dock using the power jumper.
2. Connect the power supply to the first dock.
3. Plug the power supply into the AC/DC plug.



CHARGE THE MEMOR 30/35

Insert the adapter into the dock.



Insert the device into the dock with the screen facing front and the head facing up.



Charge the Memor 30/35 with Protective Boot

Remove the adapter (if inserted).



Insert the device into the dock with the screen facing front and the head facing up.



To remove the device from the dock, pull it upwards while holding the dock firmly down.

LED INDICATORS

| LED Behavior | Operation Status |
|-----------------|------------------|
| Power ON | |
| Solid blue | Dock is powered |

TECHNICAL SPECIFICATIONS

| Mechanical Features | |
|---------------------|--|
| Dimensions | 79.5 x 410 x 125.5 mm/ 3.1 x 16.1 x 4.9 in |
| Weight | 1192 g / 42 oz |

| Electrical Features | |
|---------------------------|-------------------------------|
| Power supply ¹ | Max 12VDC |
| Consumption | Max 7 A with devices inserted |
| Indicators | Power on LED (blue) |

| Communication Features | |
|------------------------|------|
| Interface | None |

| Environmental Features | |
|--------------------------------------|-------------------------|
| Operating Temperature | -20° to 50°C |
| Storage Temperature ² | -30°C to 70°C |
| Humidity | 95% non condensing |
| Electrostatic discharge EN 61000-4-2 | 4 KV contact / 8 KV air |

¹ Use only DL approved power adapters.

² The Memor 30/35 should be charged at an ambient temperature between 0 - 40° C to achieve the maximum charging rate. Never charge the main device or spare battery in a closed space where excessive heat can build up. Close to the limits of the working temperature, some display and/or battery performance degradation may occur.

WEEE STATEMENT



Waste Electrical and Electronic Equipment (WEEE) Statement

English

For information about the disposal of Waste Electrical and Electronic Equipment (WEEE), please refer to the website at www.datalogic.com.

Italian

Per informazioni sullo smaltimento delle apparecchiature elettriche ed elettroniche consultare il sito Web www.datalogic.com.

French

Pour toute information relative à l'élimination des déchets électroniques (WEEE), veuillez consulter le site internet www.datalogic.com.

German

Informationen zur Entsorgung von Elektro- und Elektronik- Altgeräten (WEEE) erhalten Sie auf der Webseite www.datalogic.com.

Spanish

Si desea información acerca de los procedimientos para el desecho de los residuos del equipo eléctrico y electrónico (WEEE), visite la página Web www.datalogic.com.

Portuguese

Para informações sobre a disposição de Sucatagem de Equipamentos Elétricos e Eletrônicos (WEEE -Waste Electrical and Electronic Equipment), consultar o site web www.datalogic.com.

Chinese

有关处理废弃电气电子设备 (WEEE) 的信息, 请参考 Datalogic 公司的网站 www.datalogic.com.

Japanese

廃電気電子機器(WEEE)の処理についての関連事項はDatalogicのサイト www.datalogic.com をご参照下さい。

EAC